

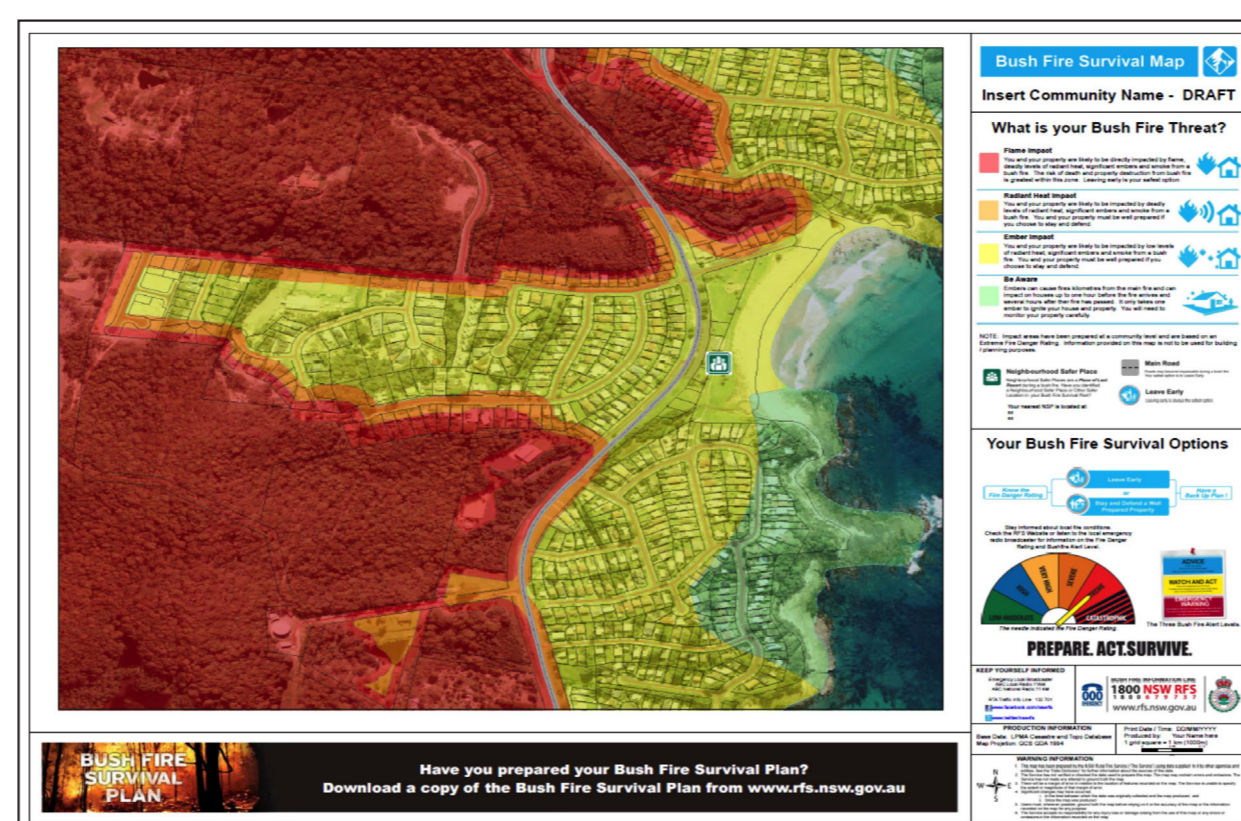


# COMMUNITY PROTECTION PLANS

## Bush Fire Survival Map

### What is a Community Protection Plan?

A Community Protection Plan consists of three maps - the Bush Fire Survival Map, the Bush Fire Preparation Map and the Operational Brigade Map - that depict information for the community and firefighters to improve their capacity to prepare and survive bush fires. This poster focuses on the Bush Fire Survival Map.



Bush Fire Survival Map

### Community protection plans aim to:

- > Assist communities make decisions and take responsibility for their safety by increasing their understanding of bush fire threats and providing information that will help in the preparation of personal Bush Fire Survival Plans.
- > Identify, assess and depict contingency options available to a given community during a bush fire.
- > Identify, assess and depict a range and timing of treatments applied to a given community that are designed to reduce the bush fire risk.
- > Identify and assess at-risk communities.
- > Assist in the preparedness of firefighters for bush fire.

### Bush Fire Survival Map

The Bush Fire Survival Map shows the following information:

- > The **Bush Fire Threat** determined by the vegetation, the slope of the land under the vegetation and the separation distance between the hazard and the asset.
- > **Neighbourhood Safer Places**, where present
- > **Leave early options**. These provide suitable relocation options, such as large townships, for people should they decide to leave early.
- > **Road access/egress** information.

This information can then be used by members of the community when preparing their personal Bush Fire Survival Plan.

Once approved the Survival Map is made available to the community.

