



# AIGIS GROUP



AIGIS GROUP  
MARK SARGENT ENTERPRISES  
ABN 413 17 992 919  
13 DEBS PARADE  
DUDLEY NSW 2290  
M: 0423 489 284  
E: [mark@mseg.com.au](mailto:mark@mseg.com.au)

**DESIGNATED DEVELOPMENT APPLICATION**  
**KARUAH RED QUARRY**  
**1783 THE BRANCH LANE & 15 ANDERSITE ROAD,**  
**KARUAH, NSW**

**Dear Sir/Madam,**

The Applicant, Karuah Red Quarry Pty Ltd (a subsidiary of Hunter Quarries Pty Ltd), is preparing an Environmental Impact Statement [EIS] to accompany a Development Application for the establishment and operation of Karuah Red Quarry, as identified in the title of this letter. The proposal is a Designated Development and the EIS will be assessed by Mid Coast Council and determined by the Hunter and Central Coast Regional Planning Panel.

The subject site is located adjacent to two (2) existing hard rock quarries, Karuah Quarry (operated by Hunter Quarries Pty Ltd) and Karuah East Quarry (operated by Karuah East Quarry Pty Ltd, a subsidiary company of Hunter Quarries Pty Ltd). An unrelated entity has also lodged an application for development of the Karuah South Quarry, adjoining the Karuah Quarry site. An image of the proposed Karuah Red Quarry site in its local context is included with this letter for your information.

As a requirement of the EIS, Aigis Group is preparing a Social Impact Assessment (SIA) for the project. This will report on any potential socioeconomic impacts on people in the areas surrounding the quarry. Preparation of the SIA also requires that opportunity be given for people in the area to comment on the quarry proposal if they wish.



### ***Preliminary Project Information***

The Karuah Red Quarry (KRQ) will be a standalone quarry operation. It will extract a material known as red rhyodacite, which is used for decorative landscaping and infrastructure projects.

A summary description of the preparation and operation of KRQ is as follows:

- Removal of vegetation;
- Site preparation and earthworks;
- Installation and operation of ancillary infrastructure;
- Installation / upgrade of site servicing (if necessary);
- Upgrade/establishment of internal access roads;
- Use and operation of mobile equipment;
- Blasting the quarry face;
- Ripping and removal of the material by mobile equipment to a stockpile area;
- Crushing, screening and stockpiling of raw material ready for transport;
- Haulage of up to **100,000 tonnes of product per year, for up to 20 years**, from the site to market via Andersite Road and the Pacific Highway; and
- Progressive rehabilitation of worked quarry areas.

KRQ is a significantly smaller scale operation than:

- Karuah Quarry: 500,000 tonnes per year, noting that this quarry is in the process of scaling down operations and now largely operates on a project-specific 'campaign' basis to 2027.
- Karuah East Quarry: 1.5 million tonnes per year to 2034.
- Karuah South Quarry (proposed by an unrelated entity): Up to 600,000 tonnes per year.

Preliminary proposed hours of operation for KRQ are as follows:

- Monday to Friday: 7am-6pm;
- Saturday: 7am-1pm; and
- Sunday and public holidays: No operation is proposed.

The Applicant and its advisors will be conducting a 'drop-in' community information session for the project, which you are invited to attend. Details of the session are:

**Karuah RSL Club**  
**4pm to 6pm/Thursday/30 March 2023**

If you are unable to attend, or would prefer to provide written comment on the proposal, you are invited to provide any comments on the present application via the email address below:

[mark@mseag.com.au](mailto:mark@mseag.com.au)



This is the firm's preferred means of contact, as it permits an accurate record of your comments, and prompt response from the firm. If you are unable to contact the firm by email, or would prefer, phone and mail address details are provided below.

You are requested to respond by 6.00pm Thursday 30 March 2023. Please note that any comment you provide will be reported on a confidential basis. Your personal details will not be disclosed in any subsequent reference to such material. It is also advised that this is an initial stage of community engagement. Following lodgement of the DA, it will be placed on public exhibition by Council. At that stage of the process, you will have the opportunity to consider the proposal in full, and provide comment based on all project particulars, should you wish to do so.

Should you have any further questions regarding this notification, please contact Mark Sargent (Aigis Group) on 0423 489 284.

Yours sincerely

**Aigis Group**

**Mark Sargent**

Principal

Aigis Group/Mark Sargent Enterprises

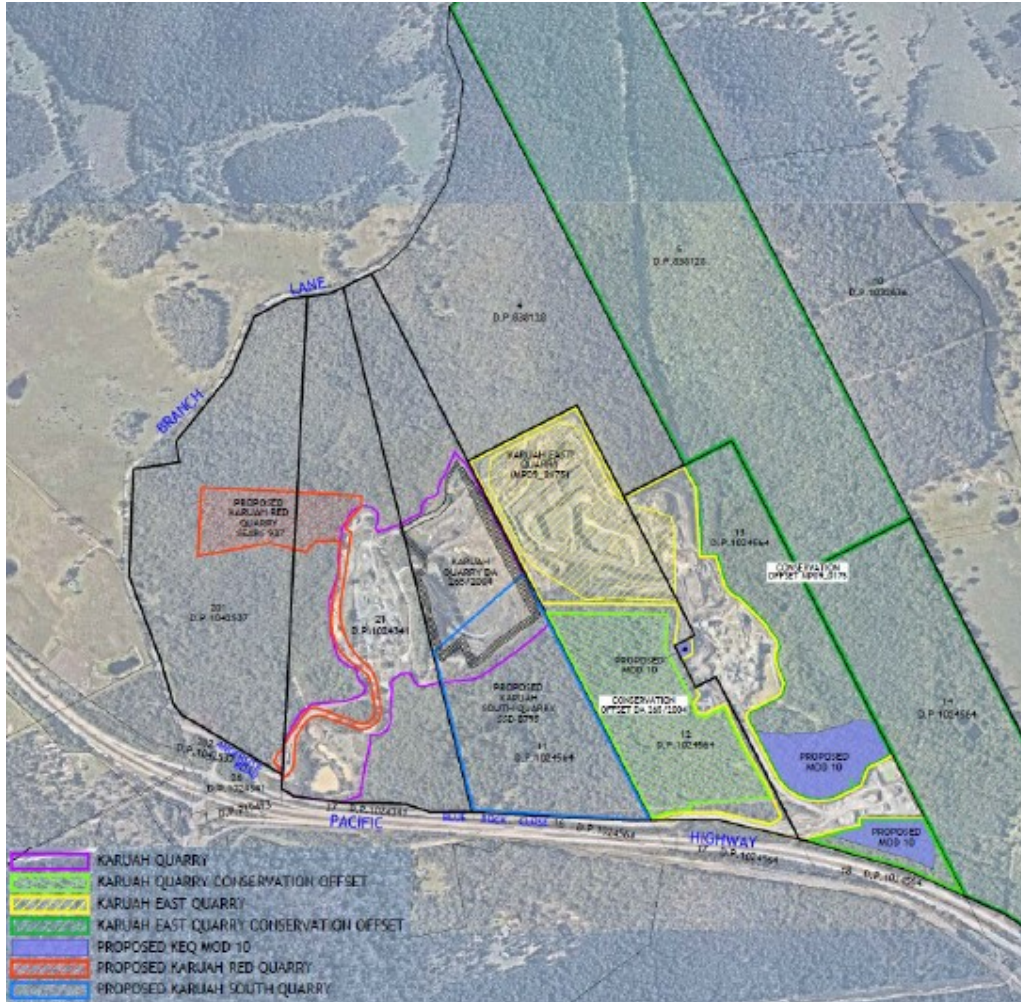
13 Debs Parade Dudley NSW 2290

(M): 0423 489 284

(E): [mark@mseag.com.au](mailto:mark@mseag.com.au)



## Proposed Karuah Red Quarry and Local Context







# Proposed Karuah Red Quarry Site Plan

